
STIR THOROUGHLY! READ ALL INSTRUCTIONS CAREFULLY!

Modco TexCoat is a pure acrylic elastomeric, heavy bodied, texturing paint that can be used for a variety of purposes. **Modco TexCoat** can be used to seal porous surfaces and has the ability to give a low profiled texture. **Modco TexCoat** is available in natural white and our standard colors.

QUALITIES

Modco TexCoat is *non – toxic, weather resistant, fire retardant, will not crack or peel* and may be applied on either *interior or exterior* surfaces. Acrylics dry to an extremely hard finish enabling them to resist most normal abuse, but they still “*breathe*”. Some unique qualities of this product are: flexibility and elasticity; this allows the product to “*give*” when covering small hairline cracks. **Modco TexCoat** may be diluted with small amounts of cold water. Acrylics dry quickly in warm temperatures and **should not** be applied or stored below 5°C (degrees Celsius).

RECOMMENDED USES

Modco TexCoat may be used on most surfaces such as: concrete block, cement walls, plywood, interior drywall, stucco, **ModcoTex Base Sheets**, etc., **except plastic**.

COLOR TINTING

The **Modco Color Tint System** in a bottle is a unique system whereby a consistent amount of color tint is supplied, held in a suspension and ready to use. The system provides a color fast, fade resistant finish when used to tint **Modco Decorative Coatings**. Use an equal amount with each pail (usually 1 bottle per pail) and you will achieve the **Modco Standard Colors**. An error free factor has been built in to assure color consistency.

Simply shake the bottle well, pour the contents into the pail of **Modco Decorative Coating** to be tinted, fill the bottle approximately half full with clear water and shake well to rinse. Pour the remaining liquid into the pail being tinted and then mix thoroughly.



modco

TECHNOLOGY (CANADA) LTD.

Mail: 7610 - 116A Street, Delta, British Columbia, Canada, V4C 5Y2

Tel (604) 351-2742 Fax (604) 594-3200

The **Modco Color Tint System** is available in a number of **Modco Standard Colors**. The proper amount of color is predetermined for use with most of the **Modco Decorative Coatings**.

PLEASE NOTE

If diluting **Modco** products with water, use consistent volumes of cold water for each pail. Always be consistent in your mixing in order to maintain consistent workability and color. If no color is added to the pail then the equivalent of 170ml (6oz.) of water per pail of product may be used to bring the product to the designed workability.

SURFACE PREPARATION

All surfaces must be clean, dry and free from dust, oil, grease, wax, rust or bleeding type stains. Any surface holes or defects should be patched and smooth. For new or previously painted surfaces a coat of **Modco PlasterPrime** is recommended in the same color as the finish coat that is to be applied.

APPLICATION

Used by itself, **Modco TexCoat** is a versatile and easy to use product which is capable of filling and sealing porous surfaces or creating textures of low profile design. Apply an even coat as you would with a regular paint, using a brush, sponge or heavy – piled roller. While wet, you can design the surface as you wish using almost anything, such as: a brush, texture roller, notched trowel, sponge, etc.

SPRAY APPLICATION

For walls and ceilings, apply a sealer coat of latex paint or **Modco PlasterPrime**. Use a hopper gun or texture sprayer to apply **Modco Texcoat** undiluted. The coverage will vary as to the size of aperture opening used.

CLEAN UP

Use hot water to clean up tools and spills.



COVERAGES

16 Liters will cover approximately

28 – 37 sq. meters (300 – 400 sq. ft.).

COVERAGES WILL VARY DEPENDING ON POROSITY OR SURFACE TEXTURE.

SET TIME

1 – 2 hours.

DRY TIME

12 – 24 hours, depending on temperatures and humidity.

CLOSE THE PAIL TO PREVENT DRYING OUT. WASH ALL TOOLS IMMEDIATELY!



Sprayed On With Texture Sprayer

Applied With Roller and Textured With Notched Trowel



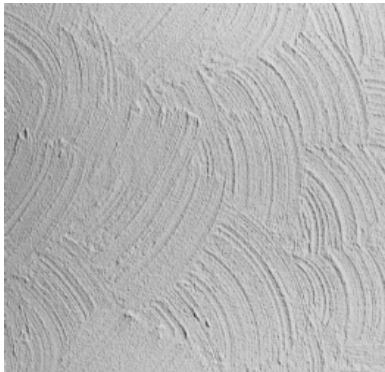
modco
TECHNOLOGY (CANADA) LTD.

Mail: 7610 - 116A Street, Delta, British Columbia, Canada, V4C 5Y2

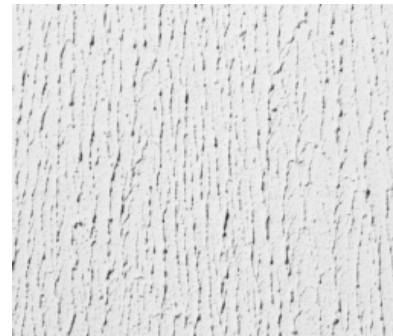
Tel (604) 351-2742 Fax (604) 594-3200

TEXCOAT
Texturing Paint
General Product Information

Applied With Sponge Roller and Knocked Down with Trowel



Applied With Brush



Applied With Roller and Textured With Plastic Roller



Applied With Sponge Textured Roller

Applied With Sponge Roller and Textured With Texturing
Sponge



modco
TECHNOLOGY (CANADA) LTD.

Mail: 7610 - 116A Street, Delta, British Columbia, Canada, V4C 5Y2

Tel (604) 351-2742 Fax (604) 594-3200